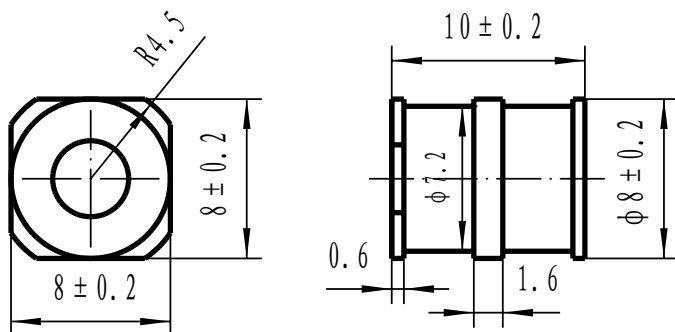


# GAS DISCHARGE TUBES

## Electrical Characteristics

Part No.	DC Spark-over Voltage	Max. Impulse Breakdown Voltage		Max. Impulse Discharge Current (8/20 $\mu$ s)	Impulse Life(10/1000 $\mu$ s)	Normal Alternating Discharge Current	DC Holdover Voltage	Minimum Insulation Resistance	Maximum Capacitance (1MHz)
	100V/S	100V/ $\mu$ s	1KV/ $\mu$ s	10 times	100A	50Hz,1Sec	<150ms		
S Series	(V)	(V)	(V)	(KA)	(Times)	(A)	(V)	(G $\Omega$ )	(pF)
3R075SB-8	75 $\pm$ 20%	600	700	10	300	10	52	10	2
3R090SB-8	90 $\pm$ 20%	600	700	10	300	10	52	10	2
3R150SB-8	150 $\pm$ 20%	500	700	10	300	10	135	10	2
3R200SB-8	200 $\pm$ 20%	500	700	10	300	10	135	10	2
3R230SB-8	230 $\pm$ 20%	600	700	10	300	10	150	10	2
3R250SB-8	250 $\pm$ 20%	600	700	10	300	10	150	10	2
3R350SB-8	350 $\pm$ 20%	700	800	10	300	10	150	10	2
3R400SB-8	400 $\pm$ 20%	800	900	10	300	10	150	10	2
3R470SB-8	470 $\pm$ 20%	900	1000	10	300	10	150	10	2
3R600SB-8	600 $\pm$ 20%	1000	1100	10	300	10	150	10	2

DC Spark-over Voltage	DC Measuring Voltage
75-90V	50V
150-400V	100V
420-600V	250V



Unit:mm

### Packaging

Quantity: 500pcs Reel